

2017 Top 10 List of Hot Trends in Greenroof & Greenwall Design



WGIC 2017, Berlin

By Linda S. Velazquez, ASLA, LEED AP, GRP, Greenroofs.com Publisher & Editor

Visit Greenroofs.com to Stay on Top of the Greenroof & Greenwall World!

Greenroof & Greenwall Projects Database: 1,683 Projects = 36,382,401 ft² (3,380,109 m²) Wednesday, June 14, 2017

Select Language ▼ Powered by Google Translate

Life on Roofs™
Environmentally Smart Green Roof Systems



TREMCO

Leaders in Sustainable Roofing Technology

greenroofs.com

home | about us | contact us | sitemap

the • greenroof & greenwall • industry • resource • portal

NEWS BLOG EVENTS JOBS MARKETPLACE INDUSTRY PROJECTS TV GREENROOFS101 DIRECTORY VIRTUAL

Come to the World Green Infrastructure Congress 2017 in Berlin in June!



WGIC
2017 BERLIN

DESIGNING WITH NATURE

20 - 22 JUNE 2017
World Green Infrastructure Congress

www.wgic2017berlin.com

Greenroofs.com's Network:



what's new:

industry **Upcoming Event Update:**
It's Not Too Late to Register for the Berlin WGIC 2017 on June 20-22!



Stay on top of the Greenroof & Greenwall World by subscribing to our email list now!

 **SIGN UP!**

Search The Greenroof & Greenwall Projects Database:

www.greenroofs.com/projects/

Social Media

Latest News

Upcoming Events

Videos

Directory

Joblinks

BookStore

www.greenroofs.com

Greenroofs.com

Connecting the Planet + Living Architecture: People, Projects & Design



2017 **reen** roofs & walls of the world VIRTUAL SUMMIT

On Demand until 12/31/17
a greenroofs.com event

HOME ABOUT SPEAKERS AGENDA EXPO REGISTER GREENROOFS.COM

< **2017**
Greenroofs & Walls of the World
VIRTUAL SUMMIT

Imagine a world of green: What are we doing to advance living architecture?

Twitter Facebook Google+ LinkedIn

Join us through 2017 at virtual.greenroofs.com

Call for Video Entries: Submit your <15- or <5-minute Videos now for Rounds 2 & 3

A Few Favorites *Not* on “The List”

Extension of public space - riding your bike on a greenroof?





Mexico City
By: Verde Vertical



Maybe too gravity-defying???

Not on The List: “Tree in the House”



Communing with nature in a tubular glass enclosure and fir tree



Minimal space & minimalist decorating

Not on “The List!”

Great for
decorating a Christmas tree?

Nature-based living or
trapped nature?

Maybe it should be called
“Tree in a Cage”!

Proposed in Kazakhstan
By: A Masow Architects



10:

Client Specific

'Boutique'

Greenroofs & Greenwalls

Lucas Museum of Narrative Art: *May the (Green) Force Be with You!*



Los Angeles, CA: 2021. \$1B sinuous space ship museum w/ undulating ribbons of plant life set on sprawling, lush 6-7 acre greenroof park atop underground parking.



**STAR
WARS**



Below: *Otoh Gunga City* STAR WARS™: Episode I The Phantom Menace



Images: Lucas Museum of Narrative Art

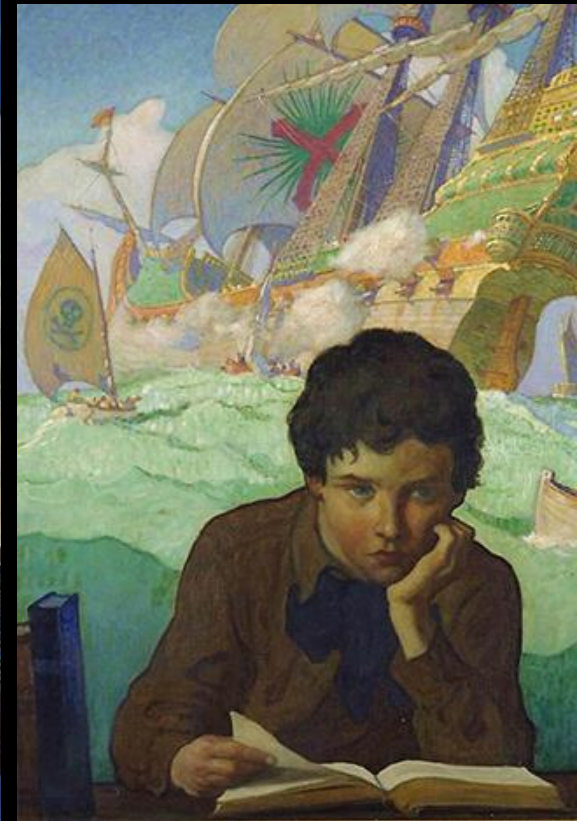
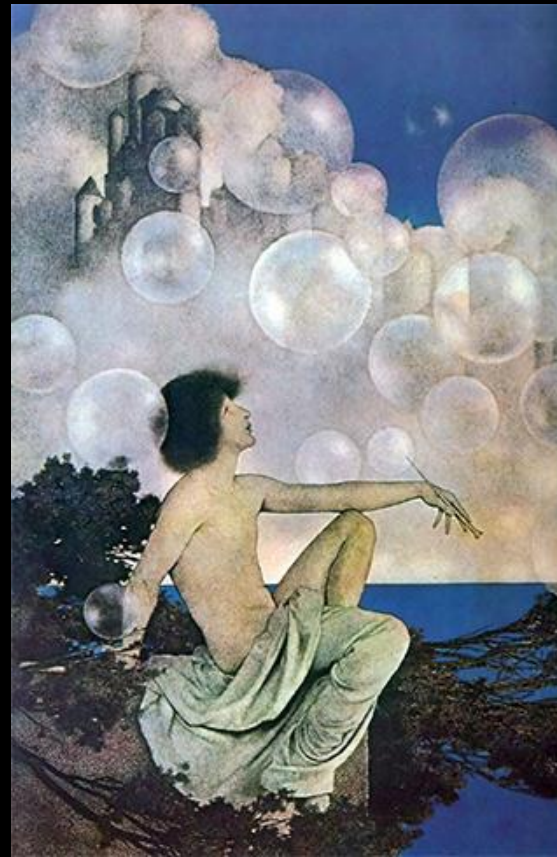
D. CHIANG

Lucas' personal \$B collection:

Narrative Art

The Art of Cinema

Digital Art



Images: Lucas Museum of Narrative Art

The Lucas Museum of Narrative Art



Underground parking for 2200. Added green space ~ 11 acres.

By: Ma Yansong of MAD Architects+

Image: Lucas Museum of Narrative Art

Novartis Building: *green origami-influenced scheme*

Image: Novartis AG



Shanghai, China: 2015. Amidst tall glass & concrete research campus, company wanted intimate 'house' for meetings, events & café space.



Images: © Eichi Kano, Novartis AG





**V-shaped columns and lattice-formed beams.
Folded greenroof almost touches the ground plane...**

By: Kengo Kuma



Images: © Eiichi Kano

...connecting with the earth.



Bunny Mellon Healing Garden:

Dedicated to U.S. First Ladies



Images: Children's National

Washington, DC: 2017. Long tradition of supporting Children's National & children of the D.C. community. Inspiration was patient's last wish to go outside.

**From gravel to
7,200 sf roof garden!**



Bunny Mellon Healing Garden

Healing Power of Nature:
Making outdoors accessible



Images: Children's National, Evy Mages

By: Perkins+Will

Vancouver Public Library: *Opening the “Garden in the Sky” to the Public*

B.C., Canada: 2018. Renovation of the iconic 1995 Central Library

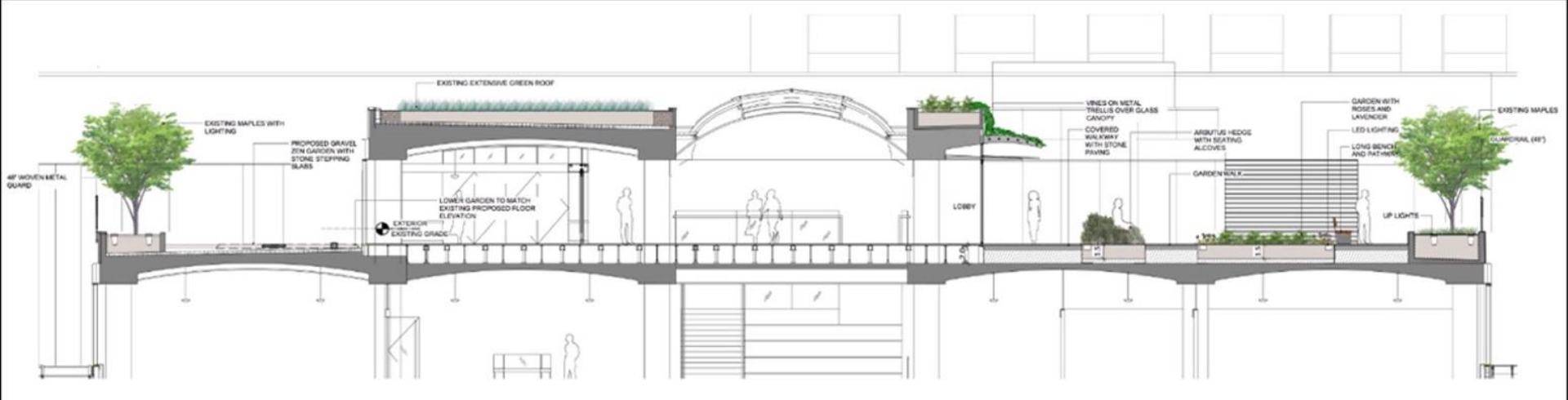


Vancouver Public Library Extension

An aerial photograph of the Vancouver Public Library Extension. The building is a large, curved structure with a prominent green roof. The roof is covered in a dense layer of green plants and trees, with several white rectangular structures interspersed. The building's facade is made of light-colored stone or concrete, featuring a series of rectangular openings that create a rhythmic pattern. The building is situated in an urban environment, with other high-rise buildings visible in the background. The sky is clear and blue.

New garden at grade with existing maples; top 2 floors = reading room, community event space, theatre & public garden

Image: American Hydrotech



New gravel Zen Garden, vines on metal trellis over glass canopy, roses, lavender, seating & walkways

Vancouver Public Library



By: Cornelia Oberlander, Moshe Safdie, Connect



Landscape Architecture, American Hydrotech+

Images: VPL

IGA 2017 Visitor Center:

From gravel roof to “Biodiversity Green Roof”

Berlin, Germany: 2016. International Garden Exhibition: initiate pioneering projects & showcase exhibits on sustainable lifestyles. 2000 m² transformed into extensive build-up – substrate surface modulated.

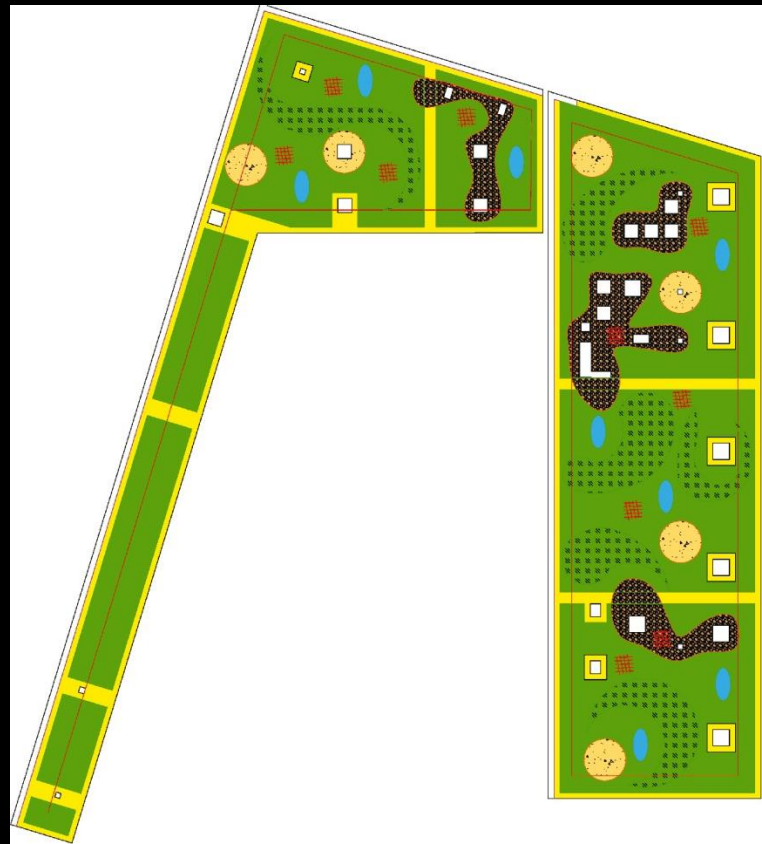




**Special selection of plants: 70 different species
& deadwood, sand pockets, coarse gravel beds**



Images: IGA 2017, ZinCo International



IGA 2017 Visitor Center



Temporary water bodies, & nesting aids for insects also added

Can be visited from adjacent small tower



IGA 2017 Visitor Center

Open through October 15

By: WW+ architecture + management sàrl,
fairplants-system, DDV, ZinCo



Images: ZinCo International, IGA 2017 webcam

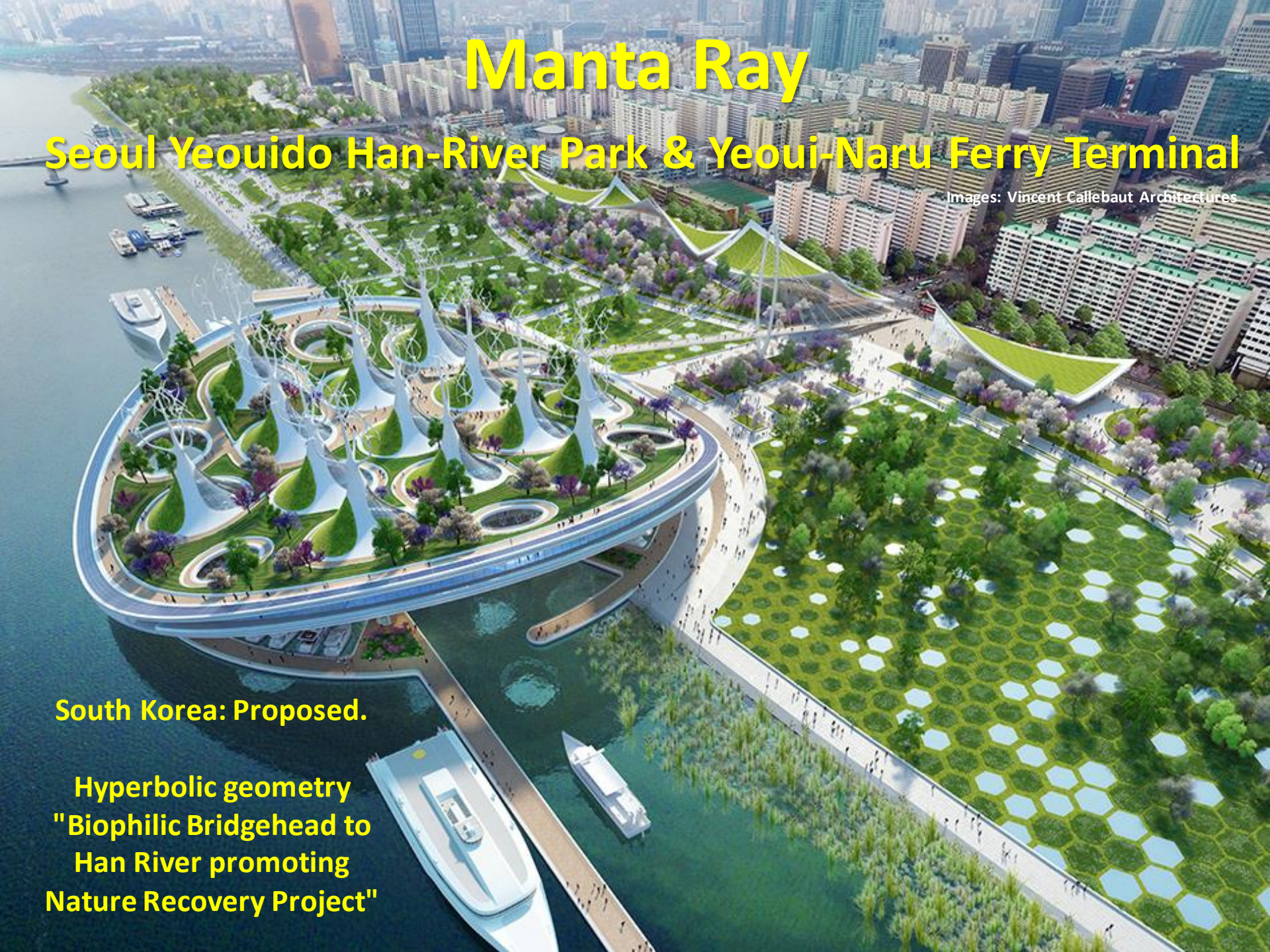
Manta Ray

Seoul Yeouido Han-River Park & Yeoui-Naru Ferry Terminal

Images: Vincent Callebaut Architectures

South Korea: Proposed.

Hyperbolic geometry
"Biophilic Bridgehead to
Han River promoting
Nature Recovery Project"





100% energy: 4500 m² pvs, 3500 m² photothermals & vertical axis wind turbines

The 3 levels:

**Floating dykes protect marina from flooding;
Upper building for leisure & recreation;
Observation deck with rooftop orchard.**



Manta Ray's soft-slope landscape allows wandering; marshlike ground landscape



Manta Ray

Promotes permeability & renaturalization of the river banks

VINCENT CALLEBAUT ARCHITECTURES, PARIS

SEOUL YEOUIDO HAN-RIVER PARK & YEOUI-NARU FERRY TERMINAL

AERIAL VIEW FROM THE YEOUIDO PARK TOWARDS THE BAM ISLAND

By: Vincent Callebaut Architectures

9:

Greening Remote Residences

Culardoch Shieling



Image: © Moxon Architects

**Upper Glen Gairn, The Cairngorms National Park, Scotland: 2016.
'The big back place' is an escape & intimate for entertaining on highland estate.**

**47 m² vernacular timber hut
allows minimal impact on
terrain & also references
modernist architecture**



Images: © Moxon Architects

**Irregular cut-out windows frame
views of granite tors & across
remote upper Glen Gairn expanse;
spruce wrapped interiors**



Culardoch Shieling

**Greenroof covered in heather, moss
& stone to blend seamlessly**

Completely off the grid





Culardoch Shieling

**Humble & casual, but also
precise, playful & sophisticated**

Images: © Moxon Architects



By: Moxon Architects

Villa Ypsilon



Images: © NAARO

Finikounda, Greece: 2017. Y shaped greenroof becomes extension of olive grove landscape. Accessible roof offers elevated views towards Bay of Schiza & Sapientza Island.



Height of house is limited to tip of the olive trees

Images: © NAARO



Villa Ypsilon

Great mountain views to the east



Villa Ypsilon



Images: © NAARO



3 secluded courtyards & pool w/ panoramic views.

By: LASSA

Villa 3 Marias

Image: SMA



Morelia, Mexico: 2015. Private residence overlooking hills & Guayangareo Valley has 13 separate hydroponic greenwalls inside & out ~ 4,000 sf.

Villa 3 Marias

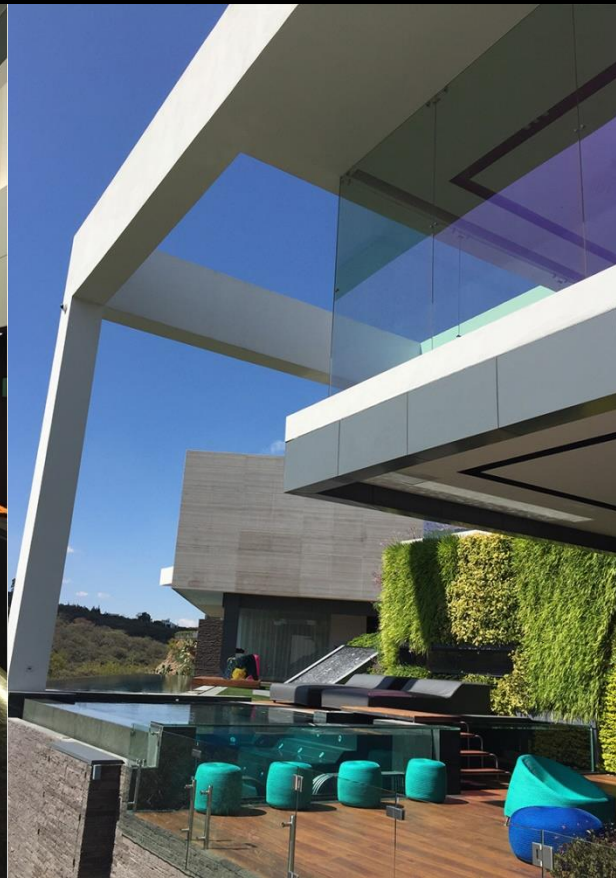
- 11,000 plants
- 35 species
- 15 varieties

Careful consideration
of light, humidity &
temperature levels



Images: SMA, Paisajismo Urbano





Images: Paisajismo Urbano, SMA

Villa 3 Marias



Images: Paisajismo Urbano



By: Sergio Magaña Andaluz of SMA & Nacho Solano of Paisajismo Urbano

8:

**Innovative Uses for Spacious
Green Civic Spaces**

Raised Gardens of Sants



Images: Adrià Goula Sardà

Barcelona, Spain: 2016. Urban renewal project for Sants railway corridor = ~51,000 sf, 5-km-long "green corridor."

3 green inclines rise to greenroof level w/ roof heights between 4 & 12 meters.



Raised Gardens of Sants



Image: Adrià Goula Sardà



Raised Gardens of Sants

Complex artificial topography w/ high density of trees & rich plantings of shrubs & ground cover

**By: Sergi Godia Architects,
Ana Molino Architects**



Skyline Plaza Frankfurt

Centerpiece is ALEX restaurant with 2 terraces.

Lush vegetation: pines, Himalayan birch & sycamore trees; watered by 265,000-liter cistern



Germany: 2013.

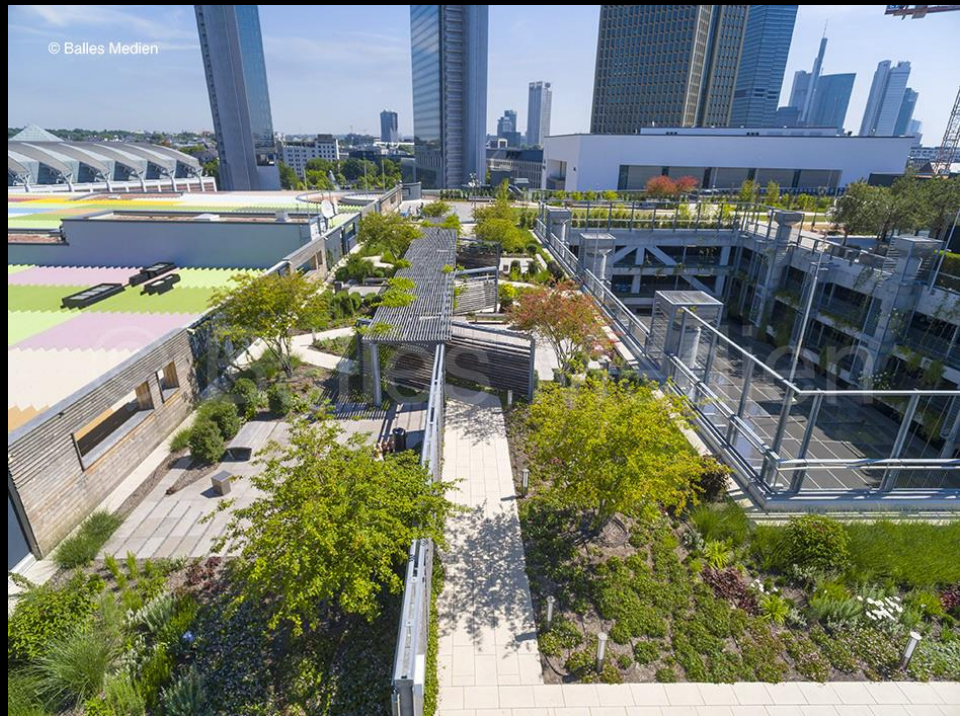
Images: Optigrün international, Mahan Rykiel Associates

Skyline Garden



**2.7-acre rooftop garden:
huge network of paths, lawns & playground**

DGNB certification in Gold





Skyline Garden

Images: Optigrün international, © Balles Medien

By: ECE, Bittkau-Bartfelder + Ing., Mahan Rykiel Associates, Optigrün international+

Seoullo

Former 1970s inner city highway
now 983m-long public park of 50
types of plants:

Trees, shrubs & flowers displayed
in 645 tree pots ~
228 species & sub-species

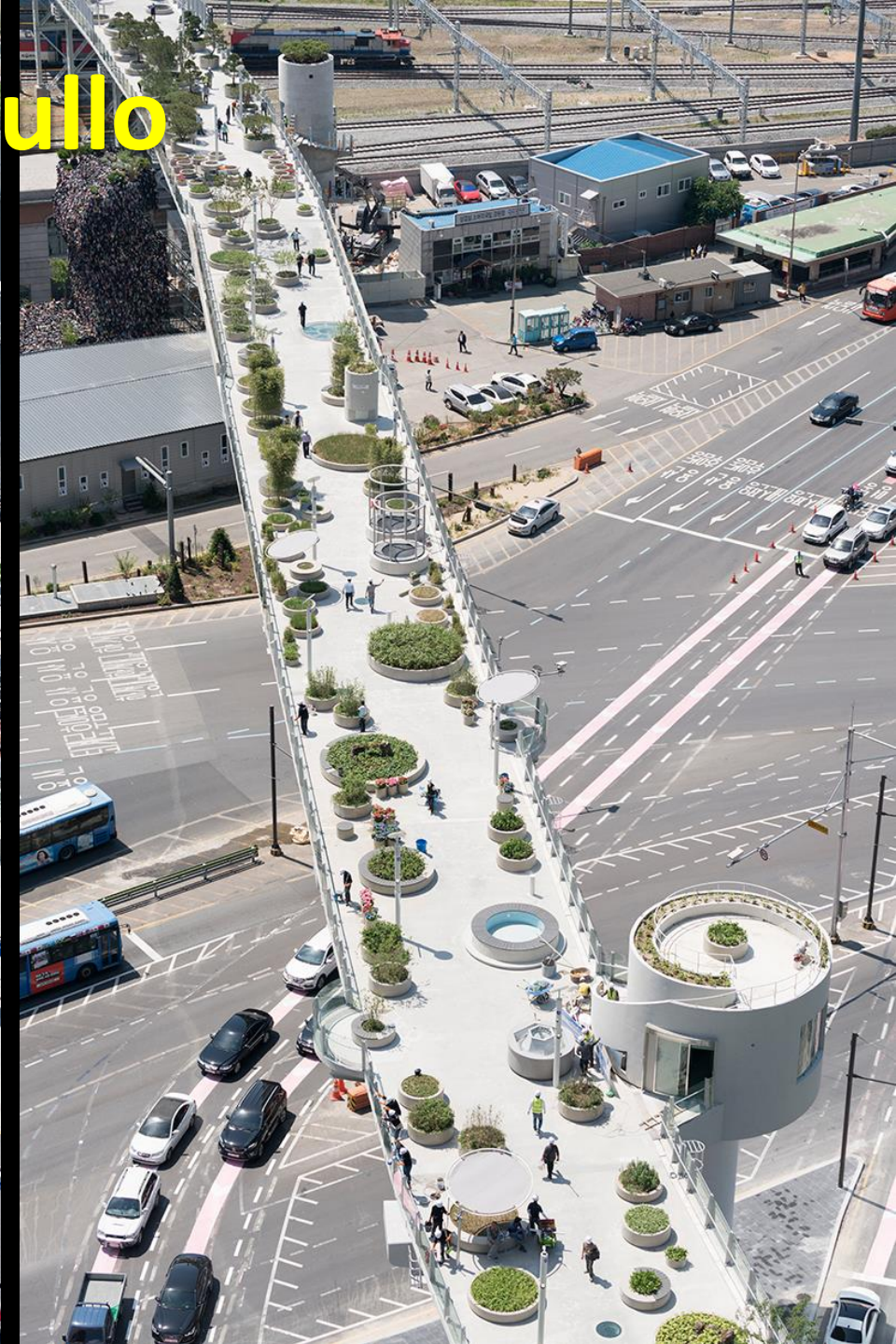
Images: by bloom © OMA



Transforming existing overpass into public garden, overlaying matrix of Korean flora onto elevated steel & concrete structure



Seoullo



Seoullo



Images: by bloom © OMA

24,000 plants; new bridges & stairs connect viaduct with hotels, shops & gardens at the heart of the city

By: MVRDV, Ben Kuipers, DMP+

7:

**Buildings Gone Wild
(in a Green Cultivated Way)**

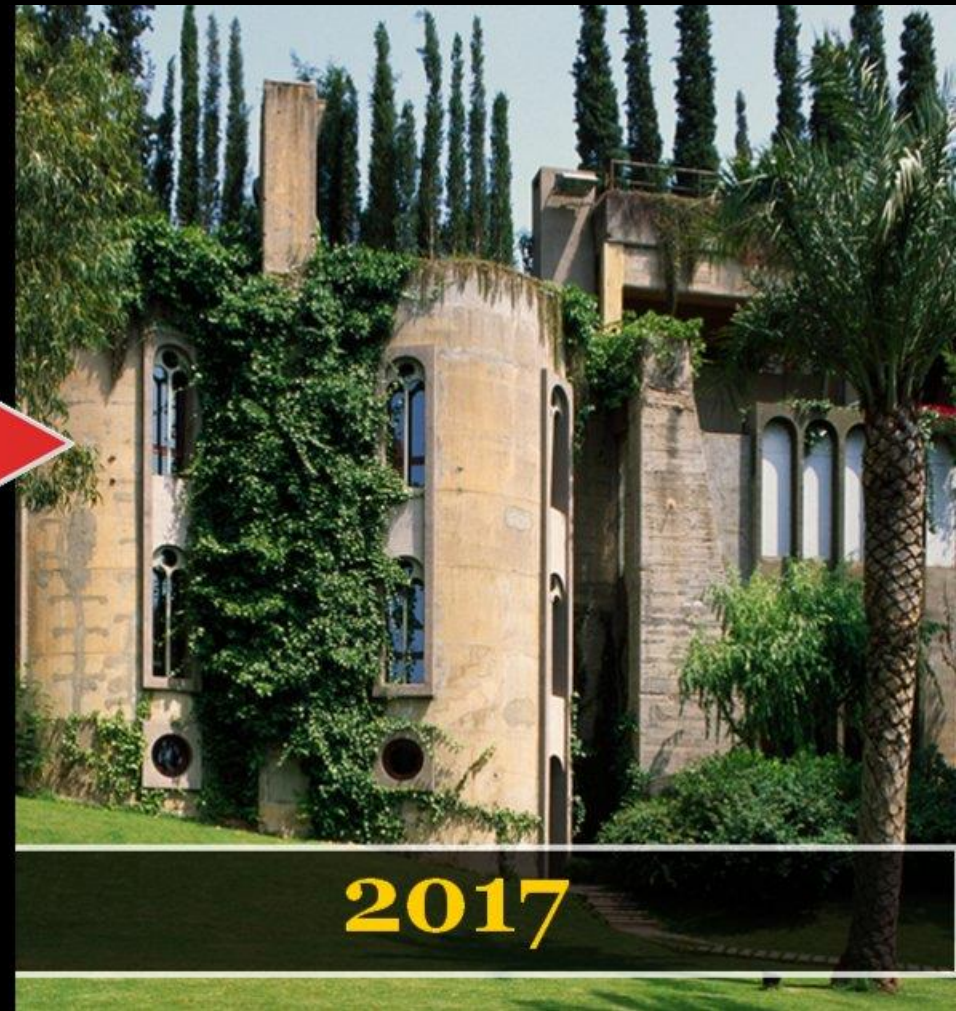
La Fabrica



Image: Ricardo Bofill

Sant Just Desvern, Spain: 1975-ongoing. Architect Ricardo Bofill's studio & home: library, model laboratory, exhibition space & gardens.

La Fabrica



**Industrial revolution to fairy tale castle:
abandoned concrete factory + lush abstract surrealism = green paradise**



“green plinths” & vines = romantic ruins



Images: Ricardo Bofill

La Fabrica

Eucalyptus, palms, olive & prune trees, mimosas, grass & climbing plants



Images: Ricardo Bofill

By: Ricardo Bofill Taller de Arquitectura

Greendo

Image: Keita Nagata Architectural Element



Takamatsu, Japan: 2015. 5 residences sandwiched between 2 roads into the terrain. Greened terraces form roofs of the homes below.

Images: Keita Nagata Architectural Element



“Continuation between the ground and roof to create a new ecosystem.”



Greendo

Image: Keita Nagata Architectural Element



Each dwelling has own outdoor garden & indoors remain at stabilized temperatures.

Greendo



Images: Keita Nagata Architectural Element

By: Keita Nagata Architectural Element

Cidade Matarazzo's Rosewood Tower



Images: Groupe Allard, Ateliers Jean Nouvel



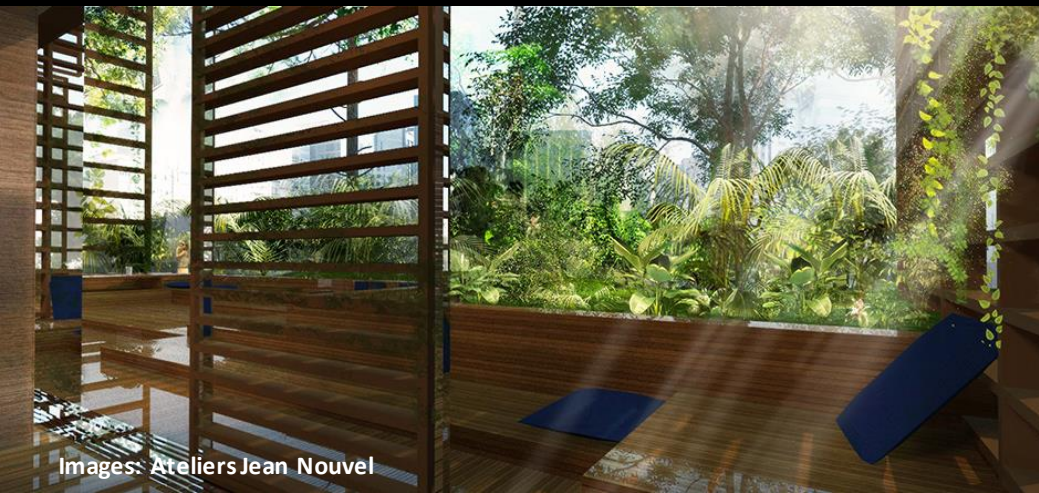
**São Paulo, Brazil: 2019. 100m tall building to be “oasis at the heart” of the city.
30,000 m² complex = hotel & residences & tribute to Atlantic Forest.**



Native vegetation populates 'landscape building' of 151 guest rooms & 122 owners' suites w/ flowers, plants & trees protruding through & above structure's latticed steel façade

Images: Ateliers Jean Nouvel





"Vertical garden" seeks to create sense of continuity between tower & its surroundings. Restaurants, bars, 2 pools, spas

Cidade Matarazzo

Lush privacy everywhere



Bringing new life to a historic building

By: Jean Nouvel, Groupe Allard, Philippe Starck+

6:

**Bringing the Outdoors In:
Surrounded by Nature**

MFO-Park



Image: By Roland zh CC BY-SA 3.0, Wikimedia

Zürich, Switzerland: 2002. Public park as redevelopment. "Park-Haus": double-walled steel-framed construction covered by trellis system & climbing plants = conservatory without glass



Images: Jacob Rope Systems, © raderschallpartner, Burckhardt + Partner



By





**At 100m long, 34m wide & 18m high =
largest pergola in the world**

30,000m of steel rope installed

Images: Jacob Rope System, © raderschallpartner





MFO-Park

104 woody vines & creepers: wisteria, clematis, climbing rose, jasmine, honeysuckle, hops, knotweed, & silver lace vine

By: Burckhardt + Partner, Raderschallpartner, Jacob Rope Systems+

Images: Burckhardt + Partner, By Chris j wood, CC BY-SA 4.0, Wikimedia



The Spheres: Amazon HQ

Seattle, WA: Current-2018. Multi-story, glass-enclosed workplace to contain 40,000 plants & trees from around the world.



The Spheres

Image: NBBJ



The 3 conjoined spheres are both meeting rooms & conservatories to house over 400 species of rare (and non-rare) plants.

Campus Plan: 3 city blocks in Denny Regrade neighborhood

Images: NBBJ



Daytime: 72°F w/ 60% humidity

Night: more plant friendly 55°F & 85% humidity

The Spheres

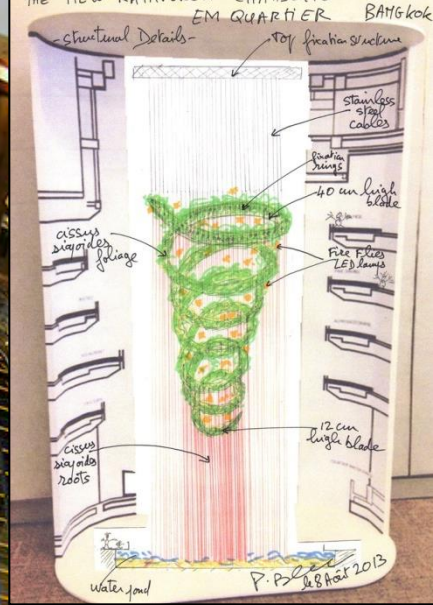


Biophilia: biodomes designed to help Amazon employees feel & work their best.

By: NBBJ

Rainforest Chandelier

Images: Asia Web Direct, Patrick Blanc



Bangkok, Thailand: 2015. Patrick Blanc: longest free hanging structure in the world totally covered by plants at 103 m long for EmQuartier shopping mall renovation.



Ferns, Anthurium, Hoya, Cissus sicyoides & many more



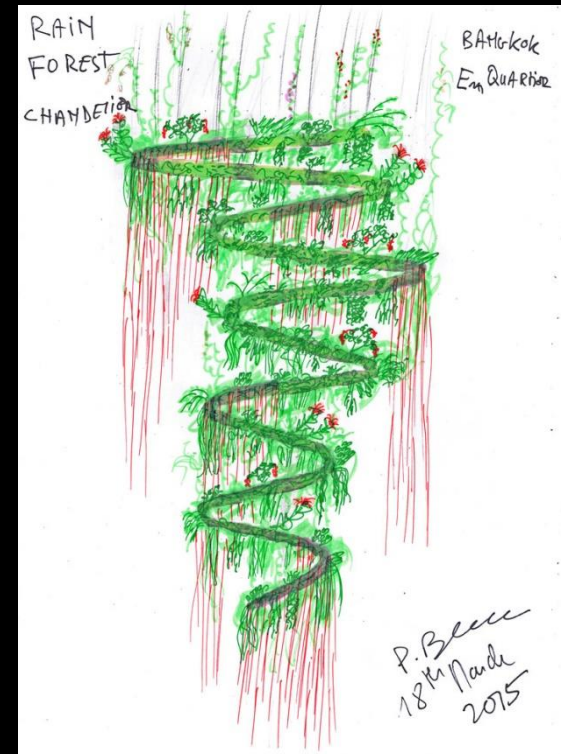


Images: Patrick Blanc

Spiral blade chandelier suspended on stainless steel cables



Rainforest Chandelier



Images: Patrick Blanc

By: Patrick Blanc, Leeser and J+H Boiffils

5:

**Living Green Hotel Façades:
Hanging Gardens in the City**

Oasia Hotel

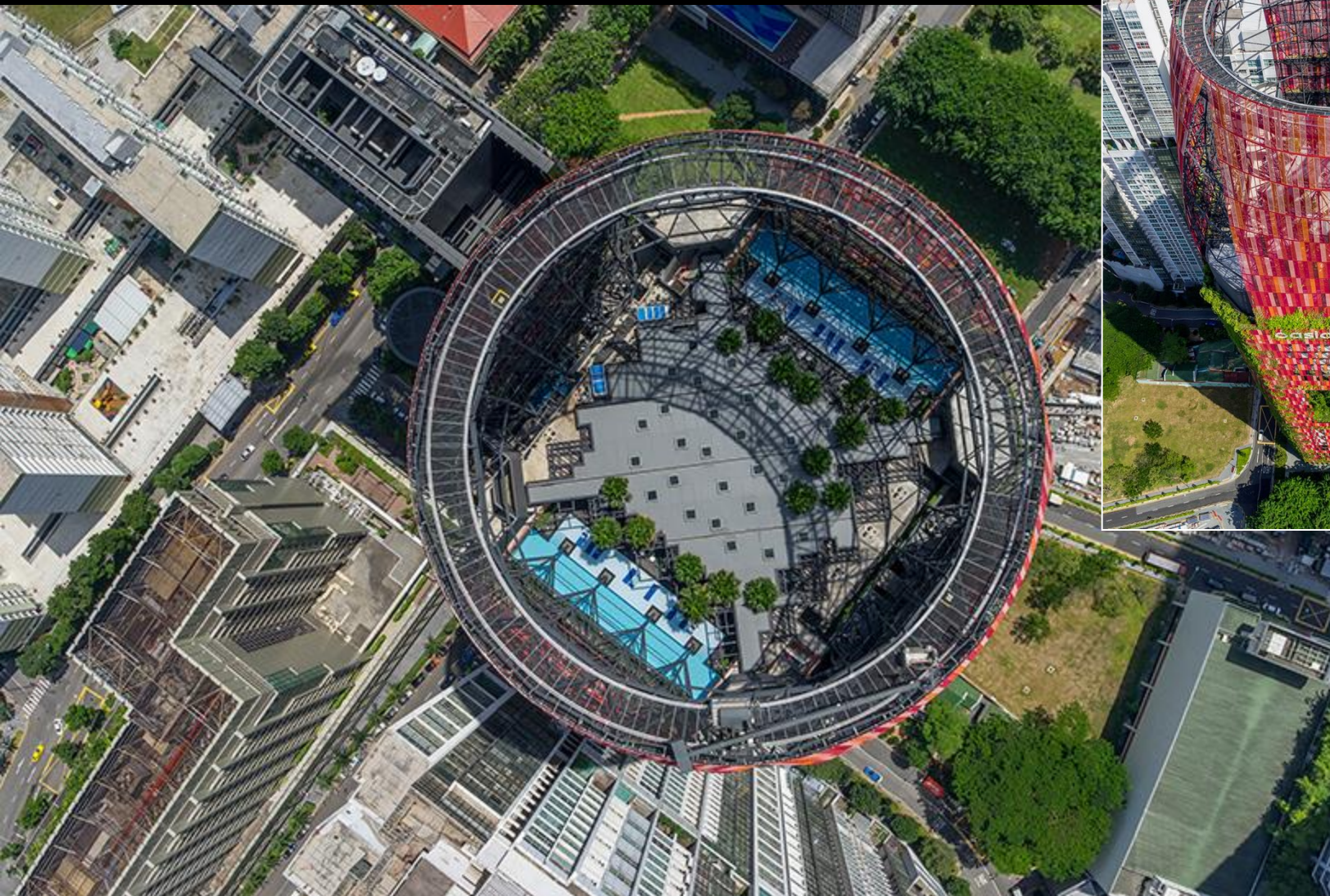
Images: © K. Kopter, © Patrick Bingham-Hall



Singapore: 2016. 190.15 m living tower, 4 sky terraces & sky garden.

21 sp of creepers on aluminum mesh cladding; 33 plants & trees

Oasia Hotel



Images: © K. Kopter

Sky garden crowns the roof. Openness promotes cross-ventilation.



Images: © K. Kopter

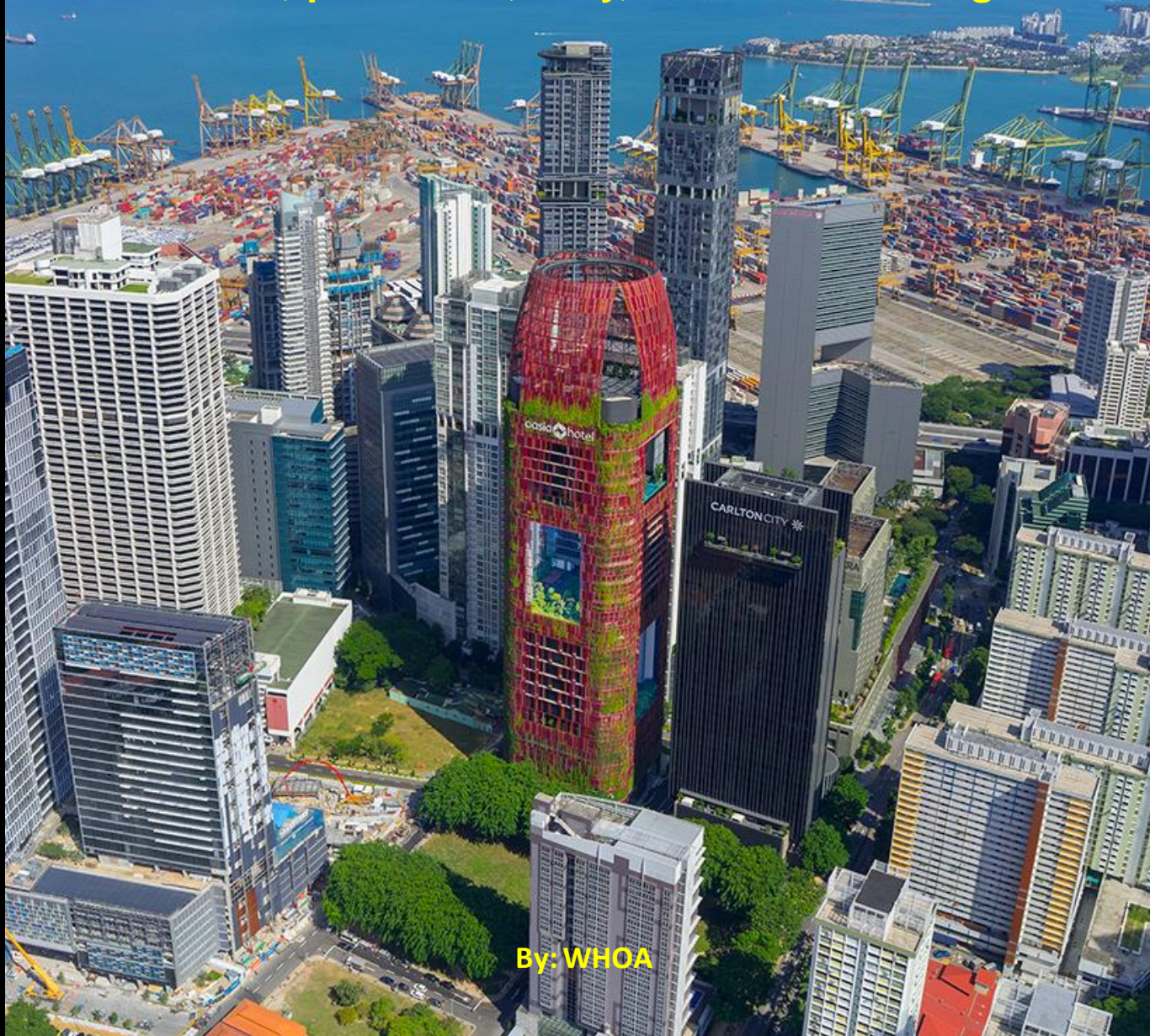
**Intensifies land use w/ tropical approach
& layers of elevated ground space.**

Plants = “architectural surface treatment.”



Oasia Hotel

"Perforated, permeable, furry, verdant tower of green."



By: WHOA

The Atlas Hotel



Images: © Hiroyuki Oki

**Hội An, Vietnam: 2016. Drapes of greenery cascade from balconies.
Entire ground floor is open plan.**



**Sheltered interconnected
courtyards &
rooms all immersed**

Atlas Hotel

Plants:

- Soften hardscape
- Provide solar shading
- Rejuvenate old town
- Welcome guests



By: Vo Trong Nghia Architects

Images: © Hiroyuki Oki

Hotel Santo Domingo Hanging Garden

Images: © Alberto Clavijo, Hotel Santo Domingo



Madrid, Spain: 2011. Interior facades greened w/soil-based greenwalls = 11,000+ sf w/ 20-m high waterfall & LED light show day & night.



Images: © Alberto Clavijo, Hotel Santo Domingo



2,500 varieties: trees & shrubs, climbing plants & herbs in 400 staggered planters





Vegetated wall:

- 8 trees reach 5 m high
- ~30 smaller shrubs
- 300 linear meters of scaffolding
- absorbs ~25,000 kg of CO₂ /yr



Hotel Santo Domingo



By: Félix González Vela, Semper Veris

Images: © Alberto Clavijo, Hotel Santo Domingo

4:

Cascading Terraced Gardens

Are All the Rage

Google's London HQ

Image: Google

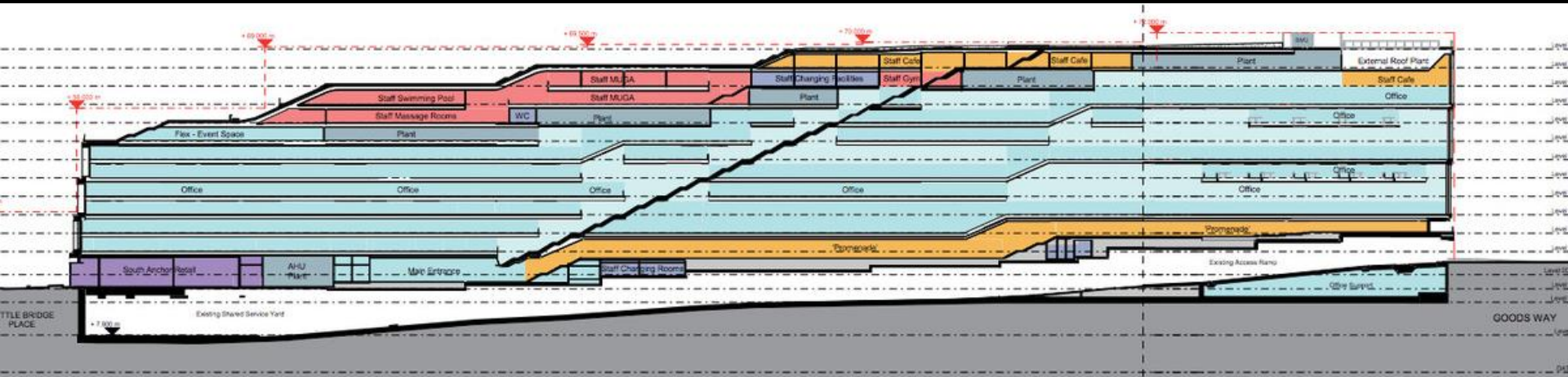


UK: 2018. £1 B “Landscaper” to be as long as it’s tall & will bring all Googlers into 1 campus.

Images: Google



11 stories; gardens will be stepped just like building; grand interior staircase.





Images: Google

The 300-meter long rooftop garden's many zones include a "pause area" filled with wildflowers & woodland plants, a cafe & 200m running trail.

Inside: basketball court & swimming pool. Vast structure = 1 M sf.

Google London HQ



Images: Google



Image:

Figure 109: Illustrative view of the Zone A Building roof from the south-west overlooking Battle Bridge Place and King's Boulevard

By: Bjarke Ingels Group and Heatherwick Studios

Beirut Terraces



Images: © Herzog and de Meuron

Lebanon: 2017. 119 m-tall highrise of staggered plates = large planted overhangs

5 key principles: layers & terraces; inside & outside; vegetation, views & privacy; light & identity



Lush vegetation offers privacy screens, creates cooler micro climates & frames views

Images: © Herzog and de Meuron



Beirut Terraces



Influenced by layers of city's rich & tumultuous history

Beirut Terraces

Encourages outdoor living



Image © Iwan Baan



By: Herzog and de Meuron

670 Mesquit



Image: © Bjarke Ingels Group

Los Angeles, CA: In progress-2020. Mixed-use for rapidly growing arts district by LA River. Customizable concrete ziggurat encloses recessed glass volume.

670 Mesquit



**Reclaiming & transforming
river bank into vital new
urban landscape**

**Enliven warehouse district
& renew arts district**



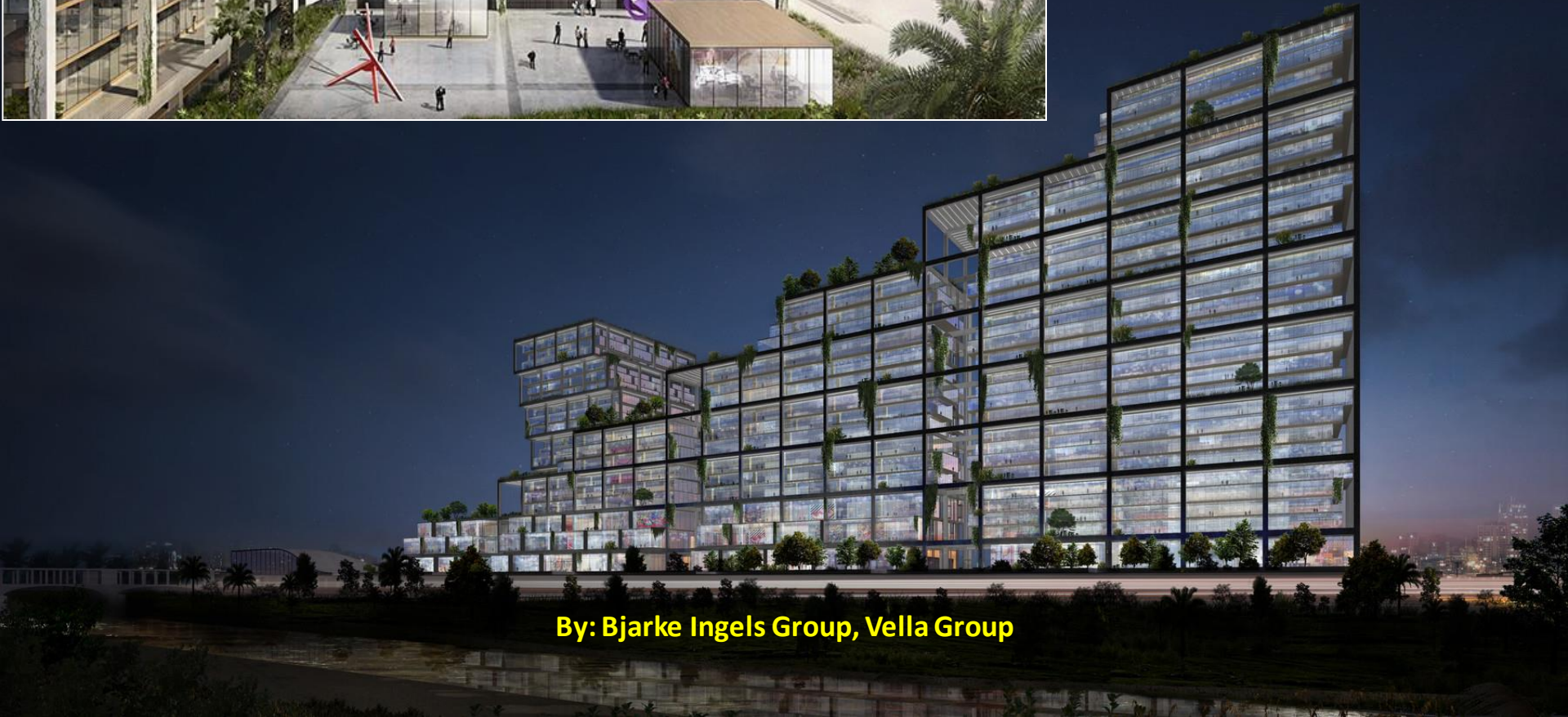


**30 stories at highest,
each frame topped with
landscaped terrace**



Images: © Bjarke Ingels Group

670 Mesquit



By: Bjarke Ingels Group, Vella Group

3:

**Dazzling Starchitect-designed
Luxury Condos in Miami**

Monad Terrace: Jean Nouvel



Images: Josh Baumgard/Curbed, JDS development

Miami Beach, FL: 2018. 59 individually designed waterfront residences overlooking Biscayne Bay. Lagoon infinity pool functions as naturally filtered ecosystem hosting native landscaping & receiving flooding.

Images: Ateliers Jean Nouvel, JDS development





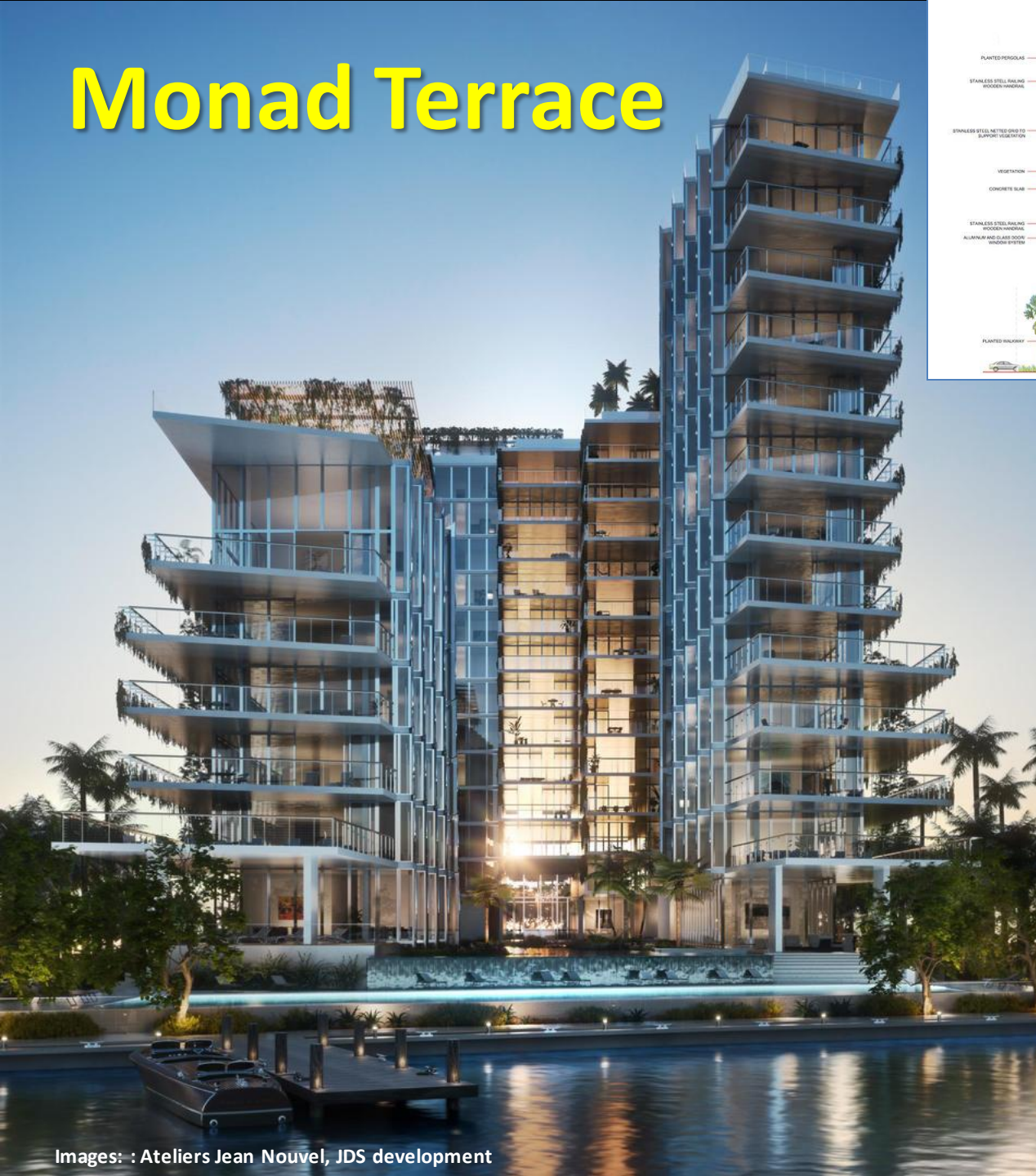
**“Curated climbing gardens”
run along N & S façades.**

**Bougainvillea, Spanish Moss,
Tillandsias, Passion Vine+**



Images: JDS development

Monad Terrace



**By: Ateliers Jean Nouvel,
Kobi Karp Architecture &
Interior Design,
JDS Development Group+**

One River Point Towers:

Rafael Viñoly

Images: © KAR Properties



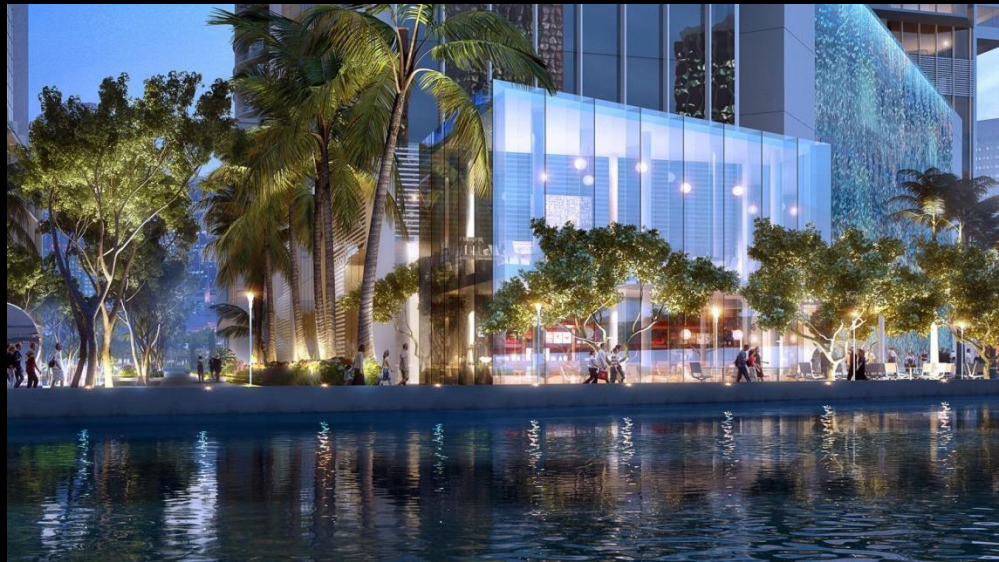
Miami: 2019

**2 65-story towers,
3-story glass sky
bridge, elevated
landscaped plinth
26m high cascading
waterfall on
Miami River.**

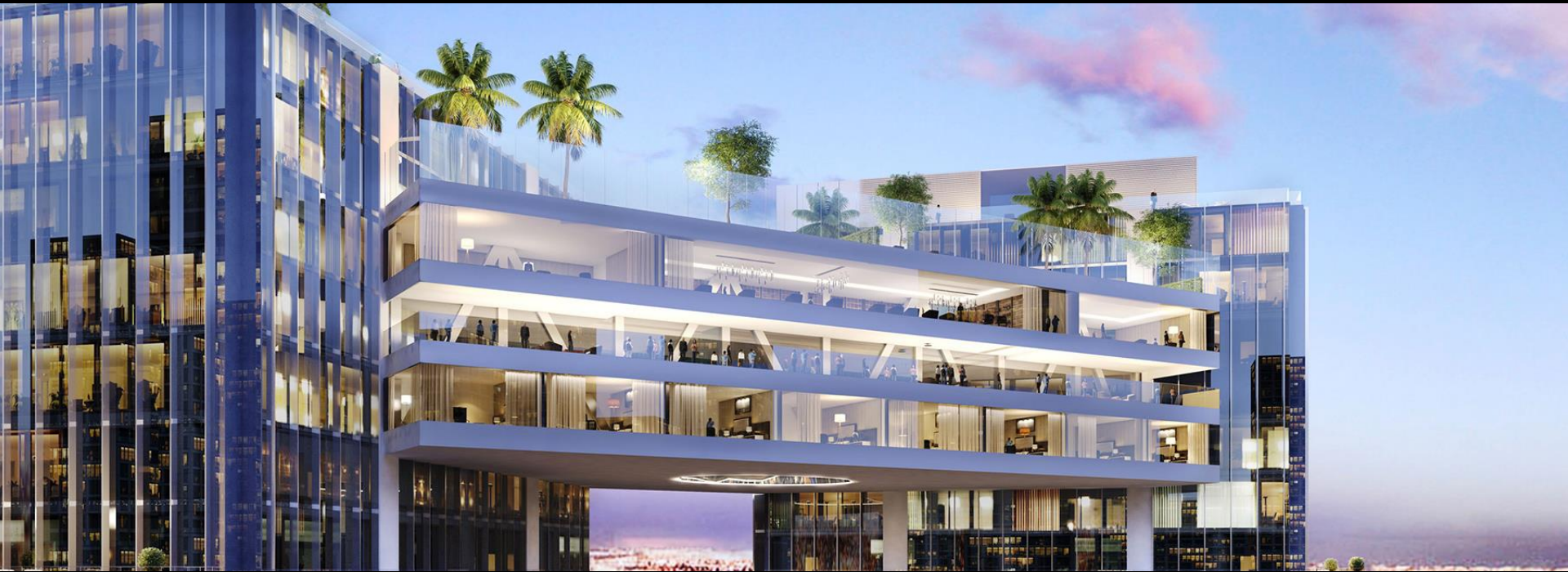


**350 condos w/ 2 penthouse sky villas
greenroof sky bridge**

**Elevated plinth:
commercial & retail space,
parking & palm tree court**



One River Point Towers



Images: © KAR Properties, : Rafael Viñoly Architecture



Private Sky Club at level 56, 800' up
Plinth topped by open-air pool deck, cabanas, spa, fitness center, lounge laundry & children's activity areas

One River Point Towers



Images: Rafael Viñoly Architecture

By: Rafael Viñoly Architecture, KAR Properties+

Grove at Grand Bay:

Bjarke Ingels



Images: BIG, Rasmus Hjortshøj



Coconut Grove: 2016. 1st LEED GOLD building in Miami-Dade; 99 condos, 2 twisting 20-story floor-to-ceiling glass towers on 3 lush acres w/ 4-sided balconies.

Grove at Grand Bay



Images: © designboom, BIG

**Podium parking & amenities = over structure greenroof of lush vegetation.
Curving greenroofed porte-cochere at base = covered walkway connecting 2 towers.**



**“Re-grove The Grove”
native plantings**

Images: Rasmus Hjortshøj, © designboom,
Rasmus Hjortshøj, Raymond Jungles



Images: BIG, Rasmus Hjørtshøj

Grove at Grand Bay



By: BIG (Bjarke Ingels Group); Nichols, Brosch, Wrust, Wolfe + Associates; Raymond Jungles; Terra+

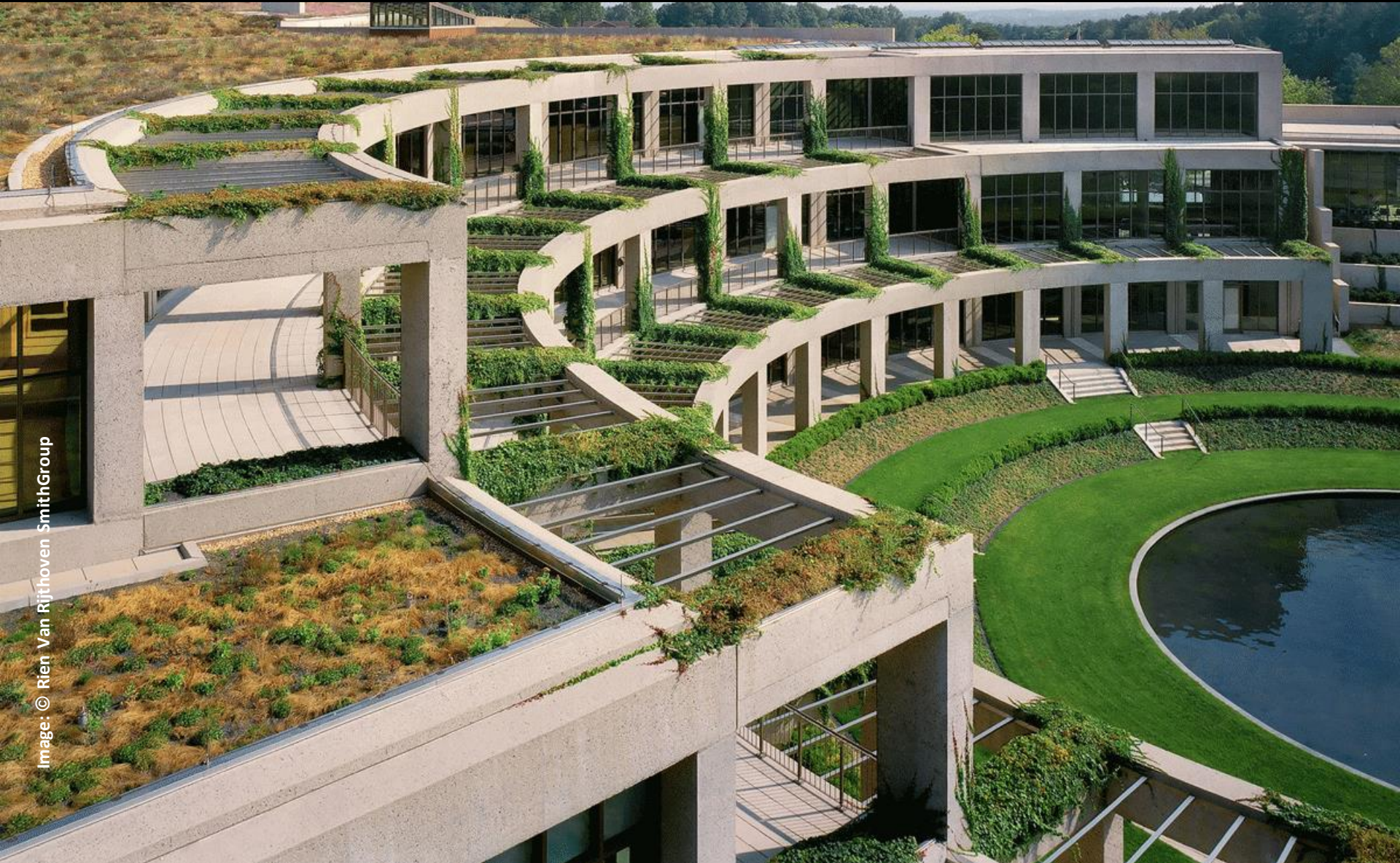
2:

**Leadership Designer Spotlight:
SWA Group**

**landscape architecture, urban
design & planning**

SWA: Library of Congress Packard Campus

Culpeper, VA: 2005. 80% of structure below grade; 228,000 sf greenroofs



SWA: California Academy of Sciences

San Francisco, CA: 2007. ~ 200,000 sf, Double LEED Platinum

Image: Tom Fox, SWA Group





Burj Khalifa Tower Park



Images: MI-Ghost Protocol, Burj Khalifa

Dubai, UAE: 2010. World's tallest building, 828 m-high, 160 stories, 11 ha green oasis w/ 85% planting on structure, merging landscape to building.



Plazas, native gardens, pools & promenades create human-scale setting

Covered garage below grade uses slope as design technique

Images: ©SWA Group





Images: Burj Khalifa, ©SWA Group



**Traditional Islamic patterns, concentric & radiating arcs cross over.
15 million annual gallons of condensed water is collected for site irrigation.**



Image:



Burj Khalifa Tower Park

Images: © SWA Group



By: Skidmore, Owings & Merrill, Emaar Properties, SWA Group+

Shanghai Tower



China: 2014. World's 1st super highrise precinct: 632 m-high

9 vertical zones w/ Sky Garden Terraces at every 22nd floor.

Images: Gensler, Connie Zhou via My Modern Met

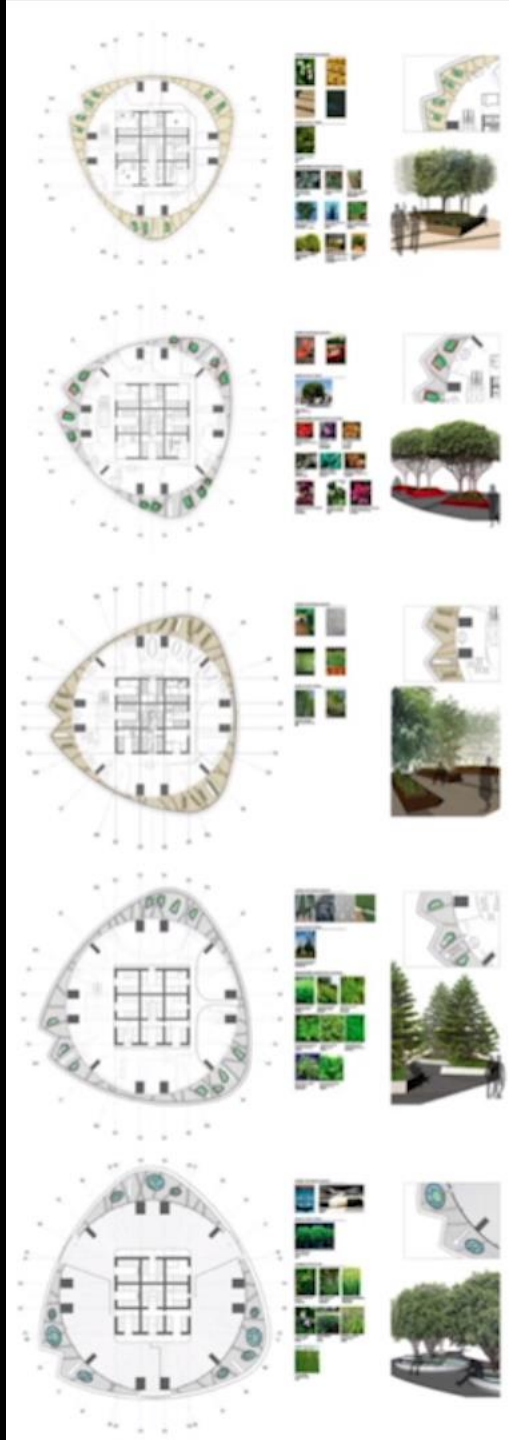




**121 stories
20+ gardens
inside**

**Public gardens
at ground level
overstructure**

Images: SWA, Gensler





**Podium trees & plants:
~ 700 m²
Sky roof garden &
Specialty gardens

Platinum LEED**



Shanghai Tower

By: Gensler, SWA+



Images: Connie Zhou via My Modern Met

Suzhou Center



Images: © SWA Group

China, late 2017. 2 new parks added to existing park. Green bridges & layers of multi-uses connect waterfront to CBD.





On access to lake - towers are gateway to Suzhou; all greenroofs over structure

Retail street terraces up to shops, restaurants & theaters

Images: © SWA Group

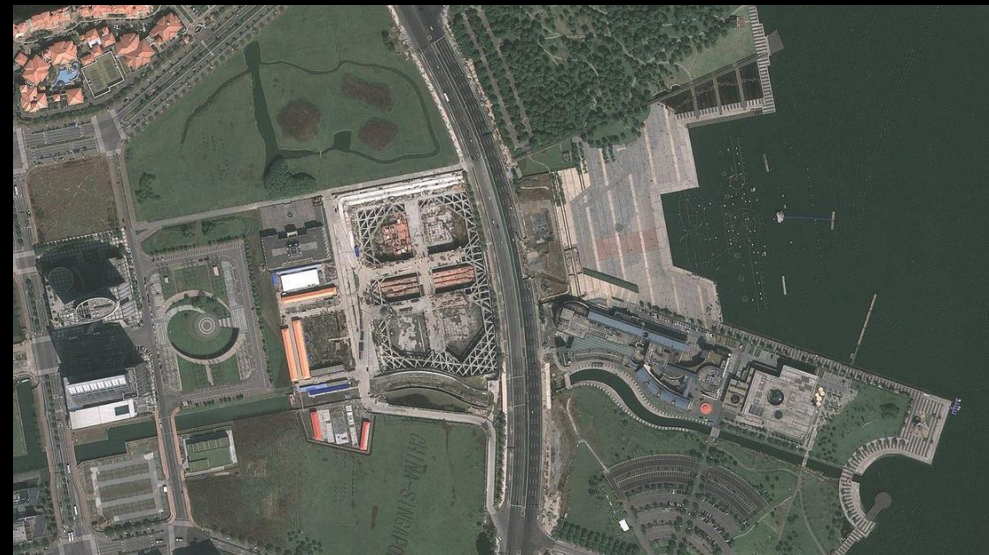




Suzhou Center

Images: © SWA Group

2 land bridges connect to park & recreational sports side; skylights to bring light through below; recent construction.



Suzhou Center



Images:

High density development & ecological conservation

By: SWA Group, Ojanen_Chioi Architects+

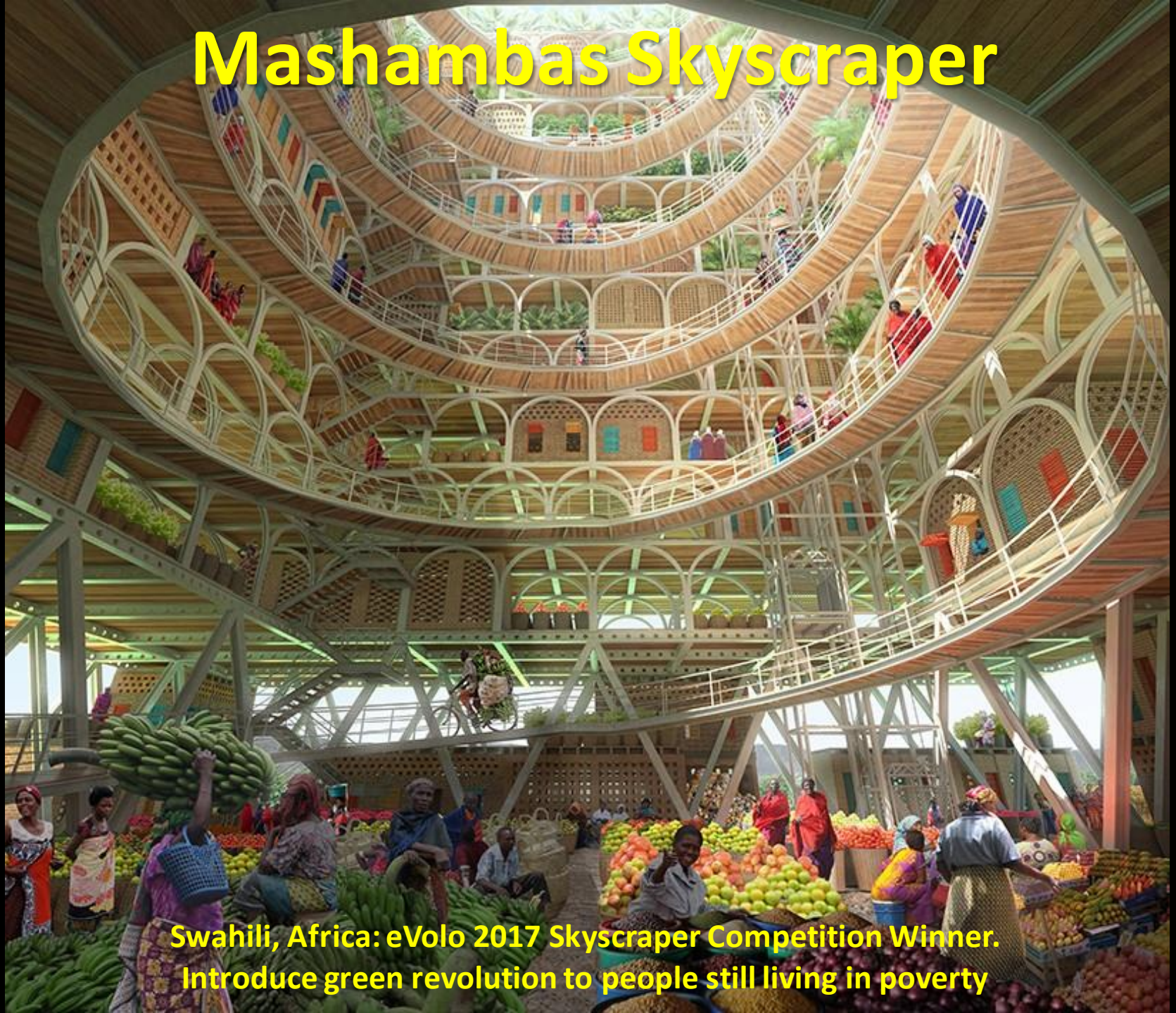
1:

**Fantastic & Fantastical Designs
to Enrich the Planet**

Mashambas Skyscraper

Image: © Pawel Lipiński / Mateusz Frankowski

Swahili, Africa: eVolo 2017 Skyscraper Competition Winner.
Introduce green revolution to people still living in poverty



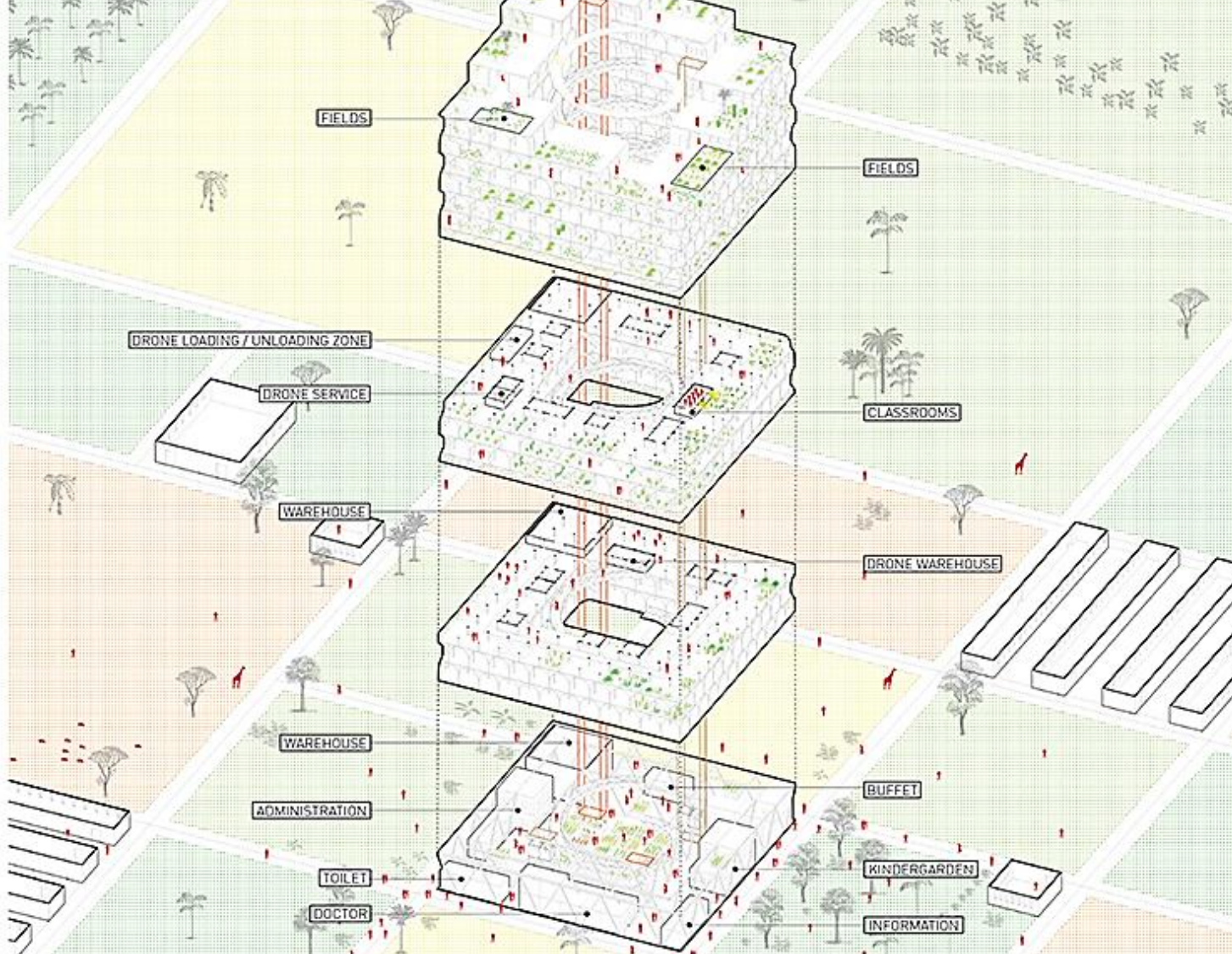
Mashambas Skyscraper

Image: © Pawel Lipiński / Mateusz Frankowski



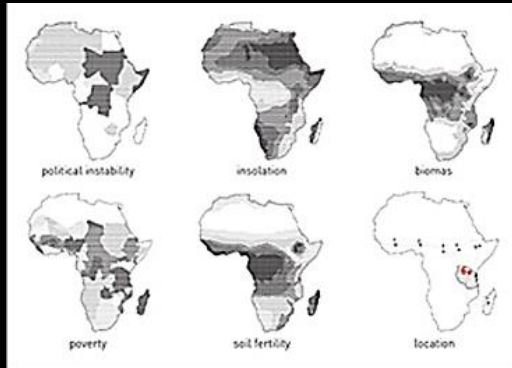
Mobile educational center w/ training, fertilizer & seeds would be distributed to small farmers, producing huge amounts of food

Mashambas Skyscraper



Levels cater to different services: drone service, classrooms & interior planting fields. Once community becomes self-sufficient it moves on.

Mashambas Skyscraper

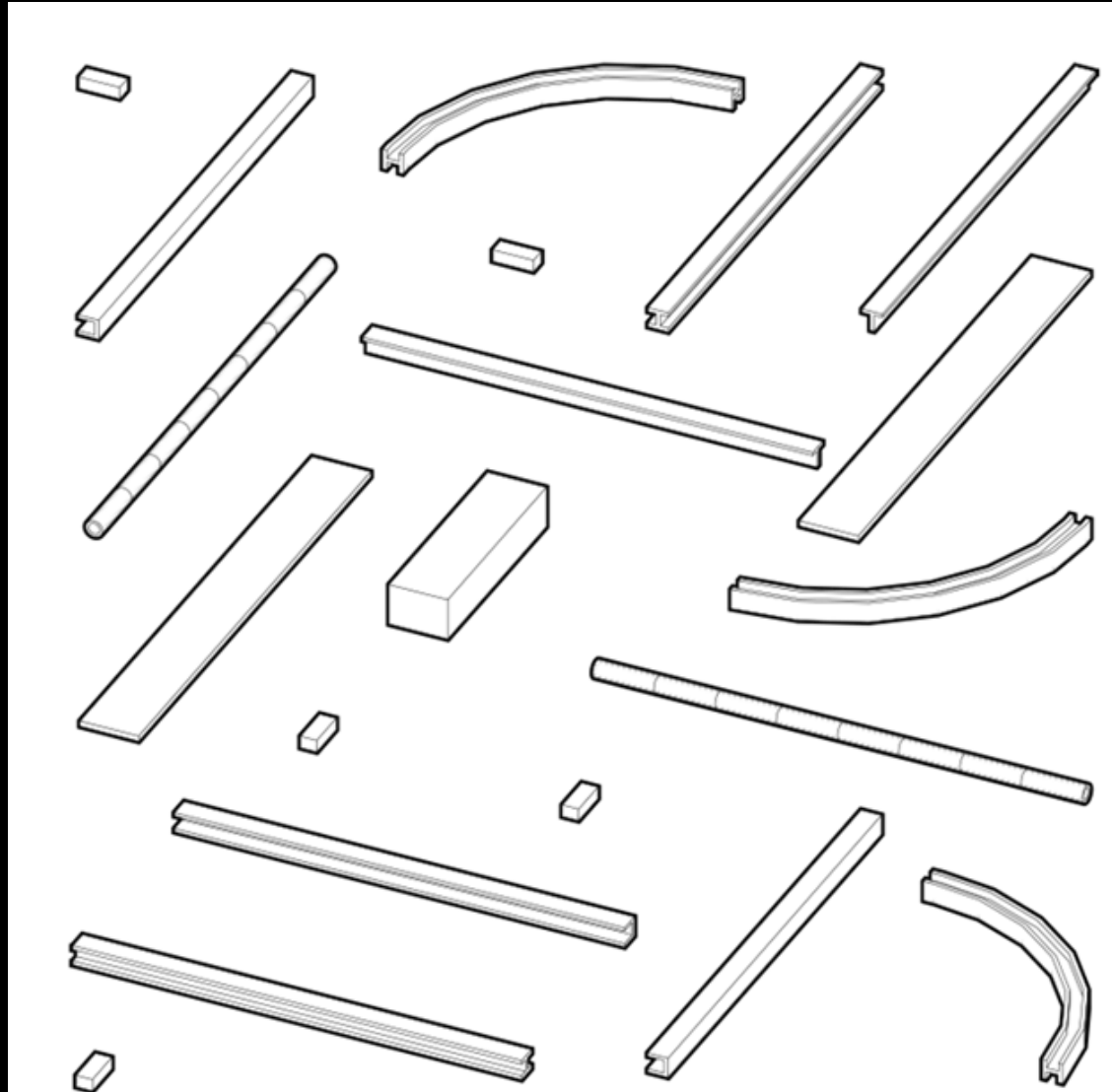


**Scalable skyscraper
conceived to reduce
hunger in sub-Saharan –
over 40% live in
absolute poverty**

**Marketplace for new
agricultural communities**

By: Pawel Lipiński and Mateusz Frankowski

Images: © Pawel Lipiński / Mateusz Frankowski



Rail Deck Park

Images: City of Toronto



Toronto, Canada: Proposed new major park bridge over rail corridor. Deck structure designed to minimize impacts on train operations below.

"Rail Deck Park...presents an opportunity to create the city's next great civic space, where all Torontonians can come to play, relax, connect, and celebrate."

Rail Deck Park renderings & feasibility

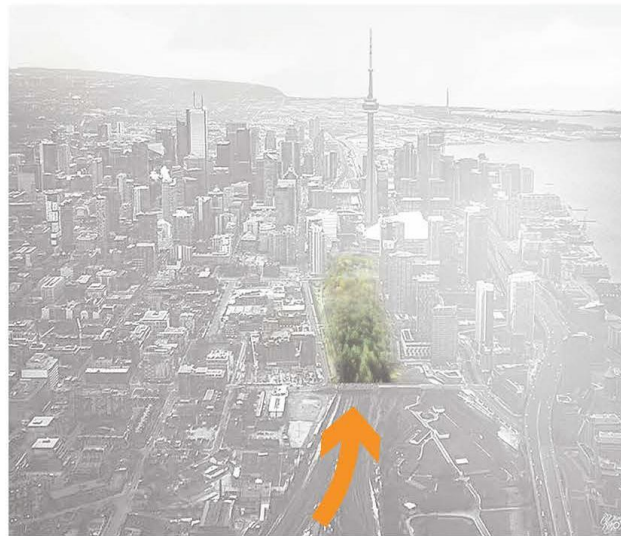
City invested \$2M to form task force - to be partnership-based city building project.

VISION TARGETS

Images: Jenny Leung, Carleton Studio at DIALOG



connecting the
immediate green
spaces



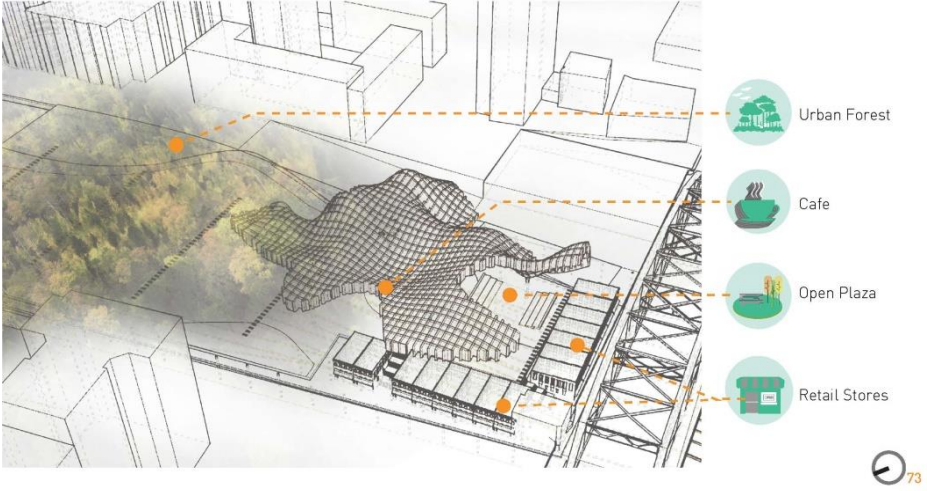
define the threshold
into the park from
the West end



connect back to
the urban fabric

DIALOG sponsored 6-week Carleton Studio w/ 15 graduate students to develop concepts.

Design Strategies: Programming



Images: Jenny Leung, Carleton Studio at DIALOG



Under the Canopy Perspective

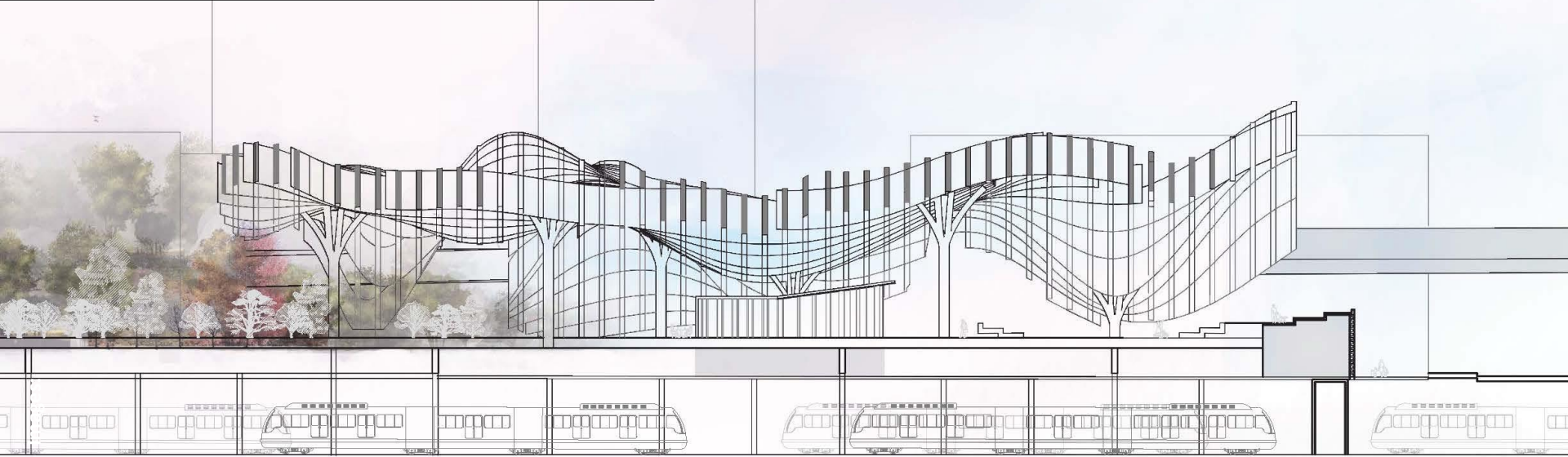
Designed master plans in teams, later in individual projects at DIALOG:

Architecture, Mechanical, Electrical & Structural Engineering; Sustainability; Urban Planning; Landscape Architecture; & Interior Design Mentors



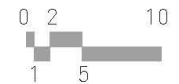
Images: Jenny Leung, Carleton Studio at DIALOG, DIALOG

Rail Deck Park renderings & feasibility



By: Graduate students from the Azrieli School of Architecture & Urbanism at Carleton University

Longitudinal Section



Quay Quarter Tower



Images: 3XN/GXN

Sydney, Australia: Proposed, Phase 2.



Circular Quay development's \$1B crown jewel = stacked glass angled volumes both sculptural & functional w/ optimal views

QQT

Upcycling existing AMP Centre,
“Vertical village” = 11,000 m²
220 m-high, 49 stories &
spans 2 city blocks



‘Stack and shift’ creates
sky gardens

5 separate volumes
w/ atria



QQT

**Flex space for retail
commercial & residential**

**24/7 destination to
employ 10,000+ people**



Images: 3XN/GXN

Quay Quarter Tower

Ratings:

- 6-star Green Star Office Energy
- 5.5 Star NABERS Energy



Images: 3XN/GXN

By: 3XN Architects, AMP Capital, GXN Innovation
BVN Architects, Design Research Studio

Brussels, Belgium: Proposed. 130,000 m2 Energy-Plus Masterplan Metamorphosis of Gare Maritime (Marine Terminal) & construction of 3 Vertical Forests.



Image: Vincent Callebaut Architectures

TOUR & TAXIS

VINCENT CALLEBAUT
ARCHITECTURES

VINCENT CALLEBAUT ARCHITECTURES, PARIS
EXTENSA, PROJECT T&T S.A., BRUSSELS

THE METAMORPHOSIS OF THE GARE MARITIME
TOUR & TAXIS, BELGIUM

MASTERPLAN / GARE MARITIME AND ZONE B
OFFICES, HOUSINGS, LEISURE & LANDSCAPE



Villas in the sky; landscape ramps; “idea labs”; retail below & open offices top.

Images: Vincent Callebaut Architectures

Tour & Taxis

Image: Vincent Callebaut Architectures



“Energy Plus Building” View along marsh pond – connects to Brussels Canal.

By: Vincent Callebaut Architectures

Visit Greenroofs.com to Explore More

Would you like to see one of your projects featured?



The International Greenroof & Greenwall Projects Database
1,683 Projects = 36,382,401 ft² (3,380,109 m²)



Register, Watch & Connect
thru the end of 2017

a greenroofs.com event

Share your news &
projects with us:

editor@greenroofs.com

www.greenroofs.com/projects/

Thank you!

Questions & comments:
linda@greenroofs.com



Project of the Week: 6.19.17
Potsdamer Platz
Berlin, Germany